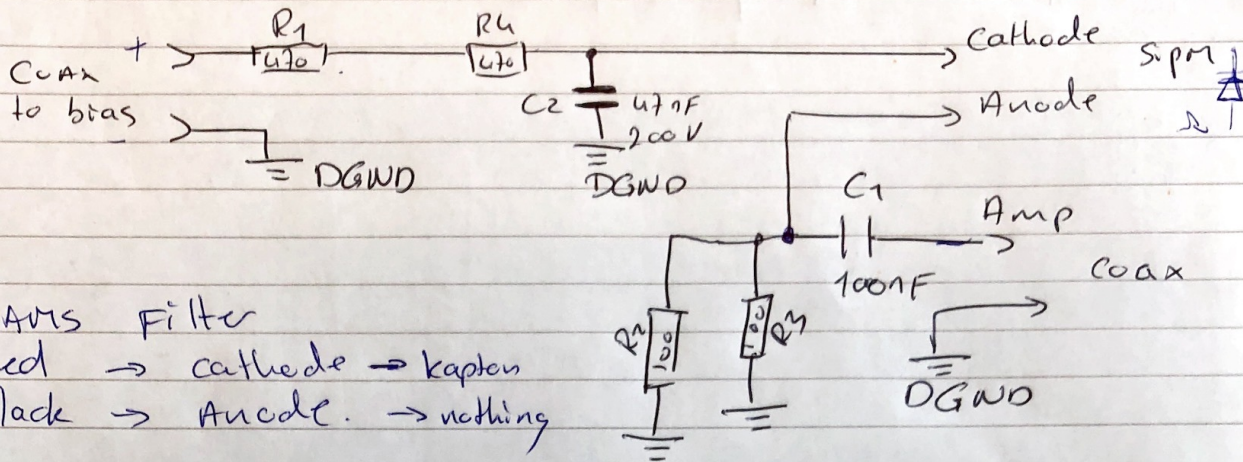
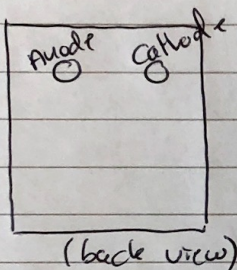


# XAMS Filter Schematic.



XAMS Filter  
 red → cathode → kapton  
 black → Anode. → nothing



1804 (defect)	$M = 2.55 \cdot 10^6 [V]$	$V_{op} = 56.58$	$I_d = 0.46 \mu A$
1P22		$V_{op} = 56.51$	$= 9.50 \mu A$
1P05		56.69	$= 9.47$

How can we check if broken?

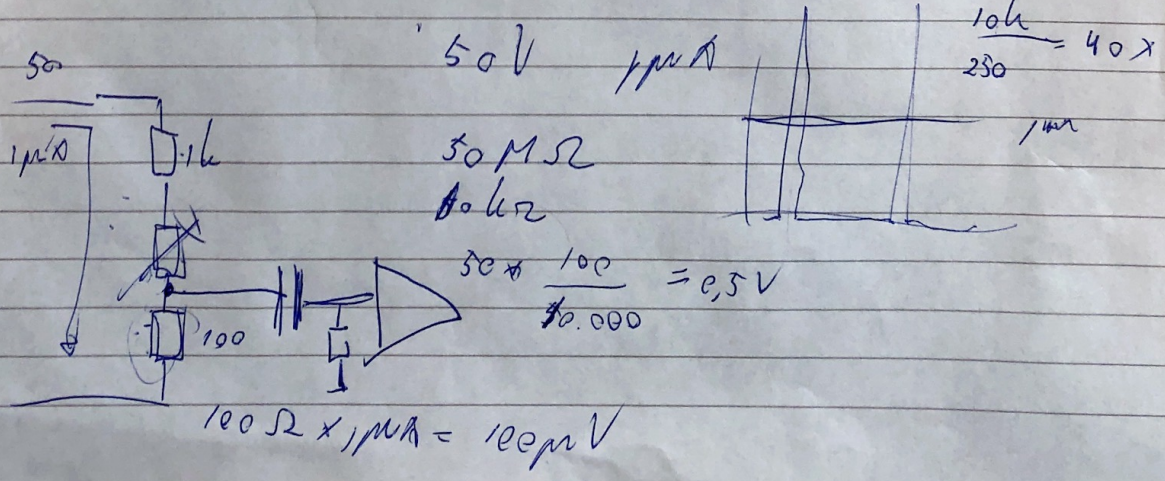
How to troubleshoot the setup.

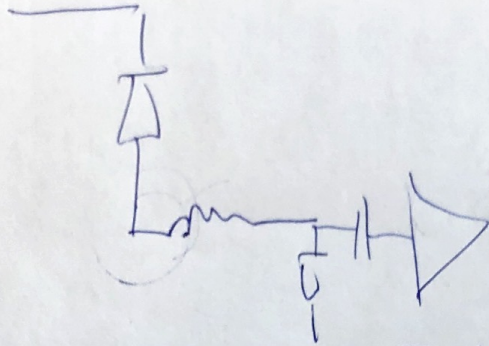
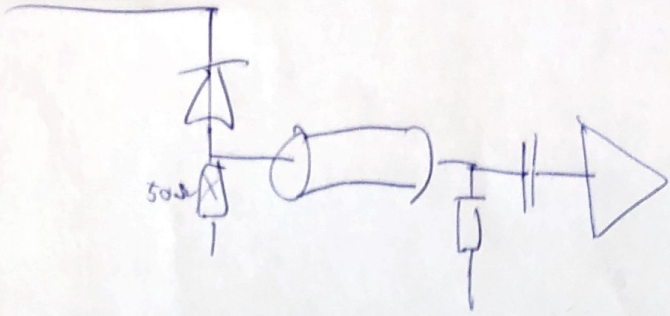
Resistance?

Why much more current?

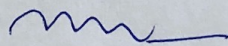
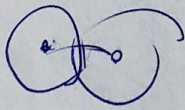
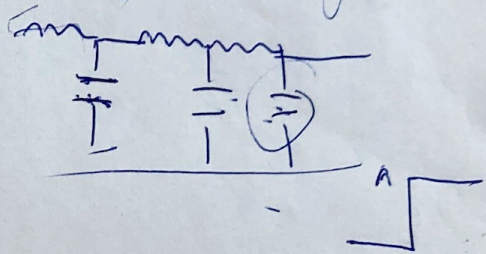
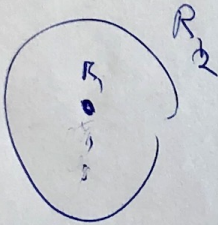
- $R_3 = 249$
- $R_5 = 10k$
- $C_7 = 10pF$

$$\beta = \frac{R_5 / C_7}{R_3} =$$

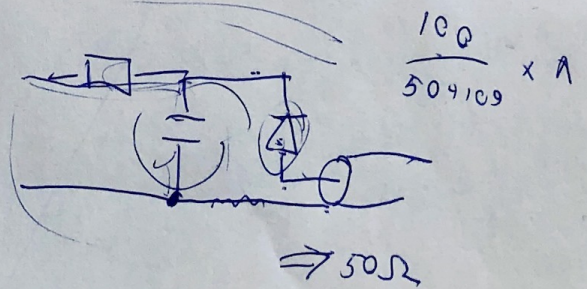
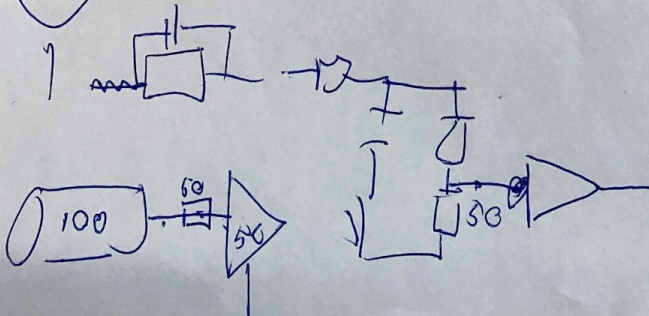
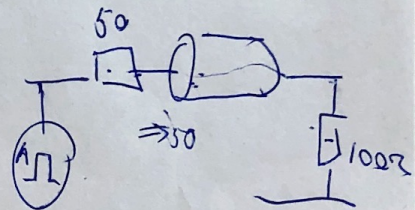
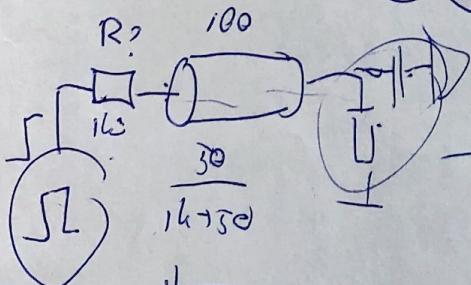




$$Z = \sqrt{\frac{R^2 + X^2}{C^2}}$$



5 NS/M



$$\frac{100}{50 + 109} \times A$$

$\Rightarrow 50\Omega$

