

Progress of the VUV setup

Casimir van der Post

 **TU**Delft

Nik|hef

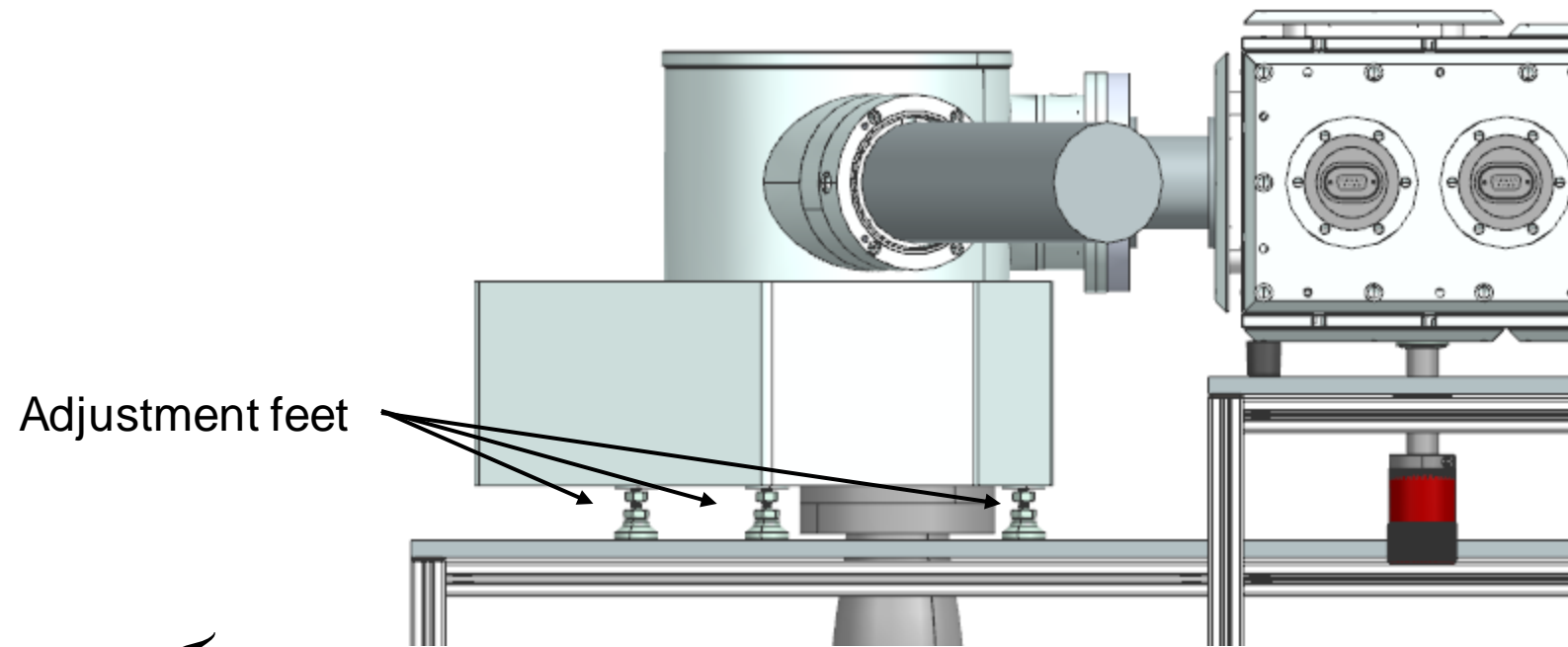
Adjustments made to the setup table to ensure its rigidity with the experiment placed on it.



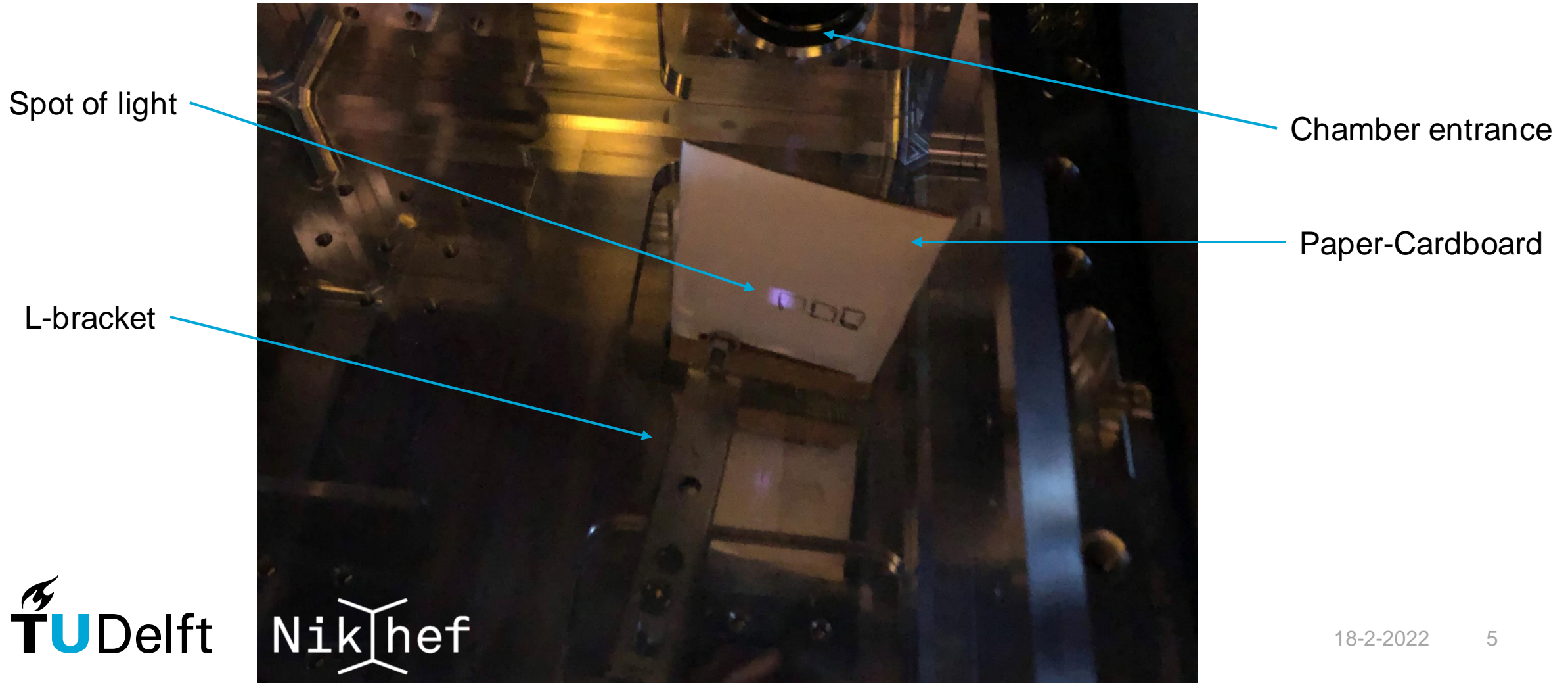
Adjustments made to the setup table to ensure its rigidity with the experiment placed on it.



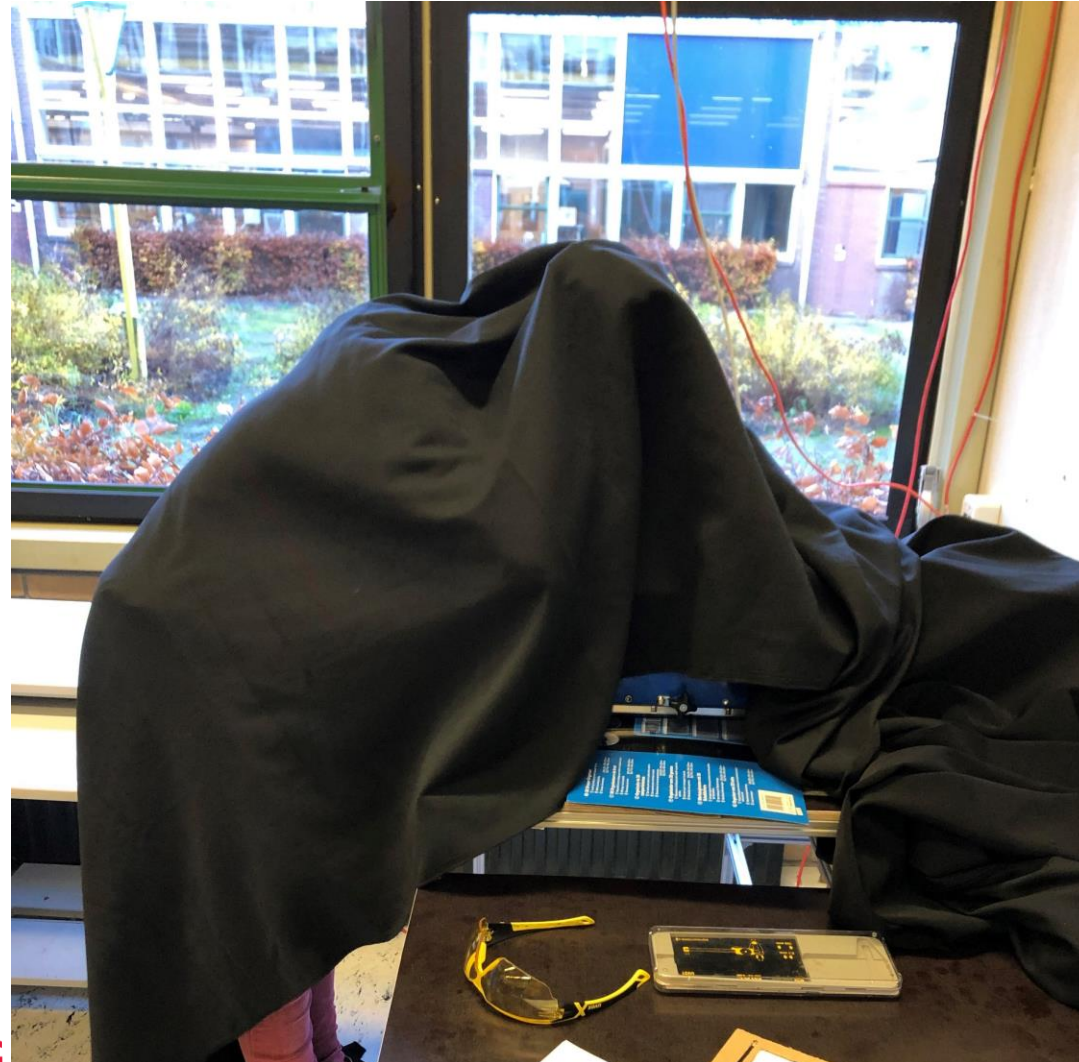
Leveling the monochromator to make it connect to the vacuum chamber



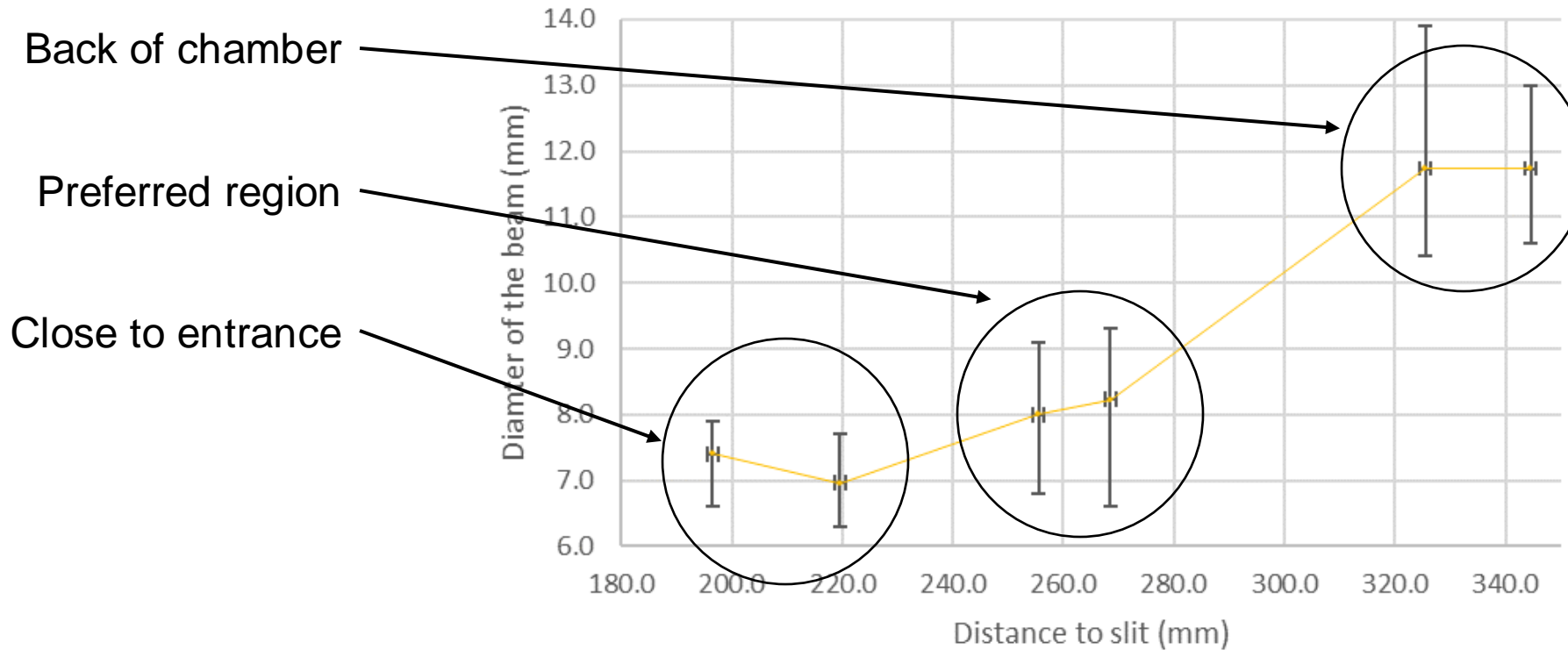
Measuring the beam size in the aligned setup to check with the predictions



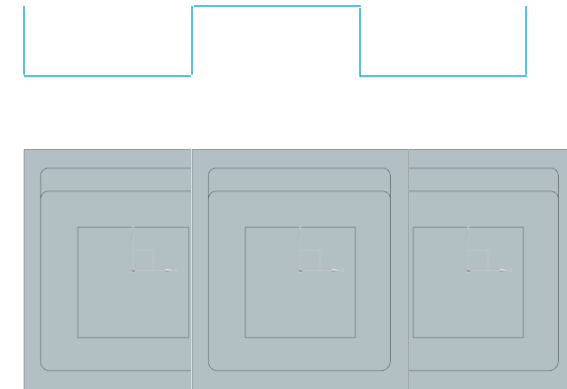
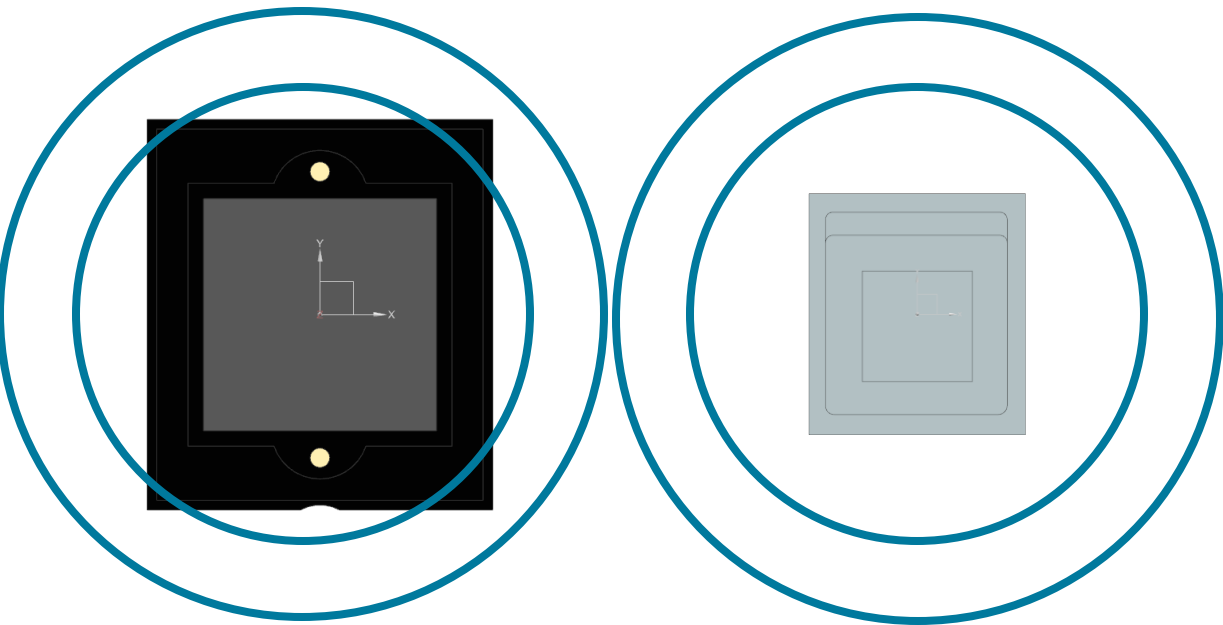
Measuring the beam size in the aligned setup to check with the predictions



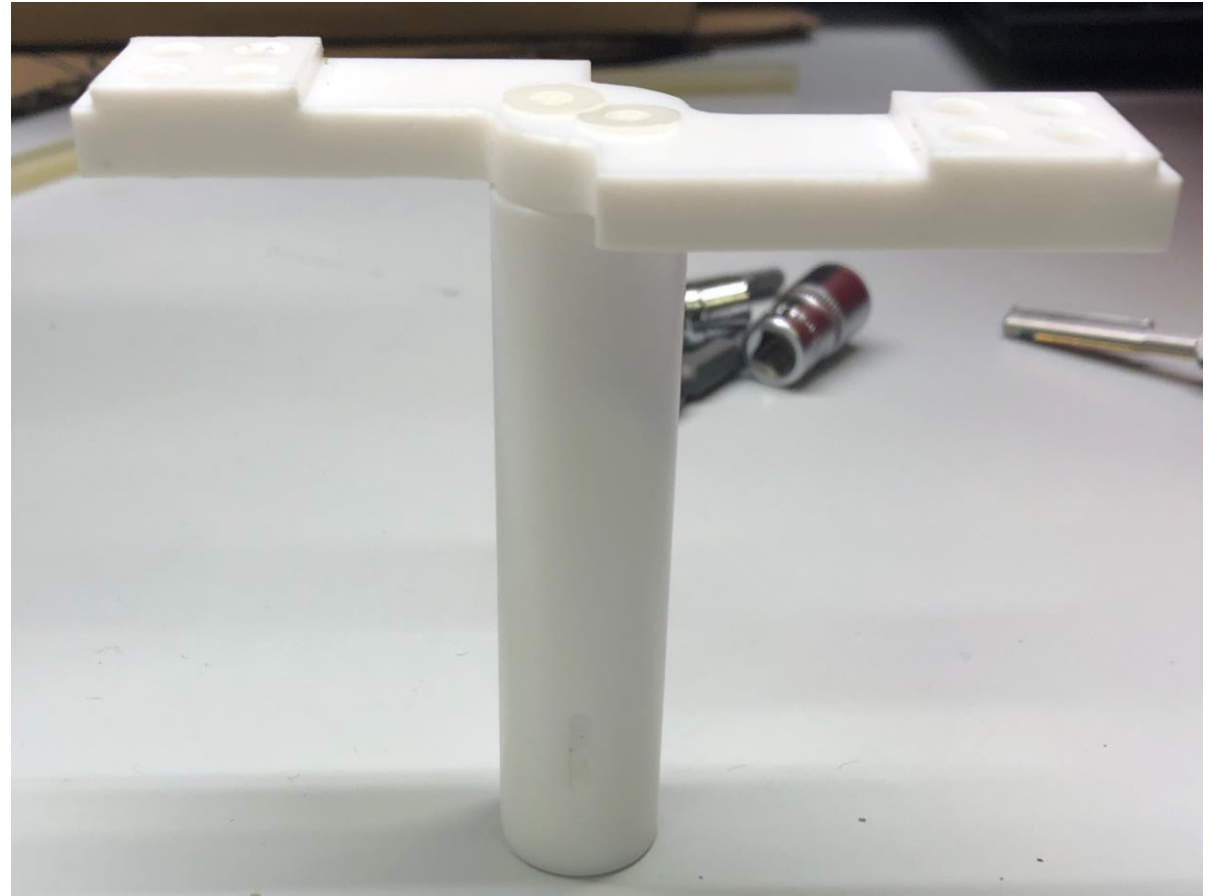
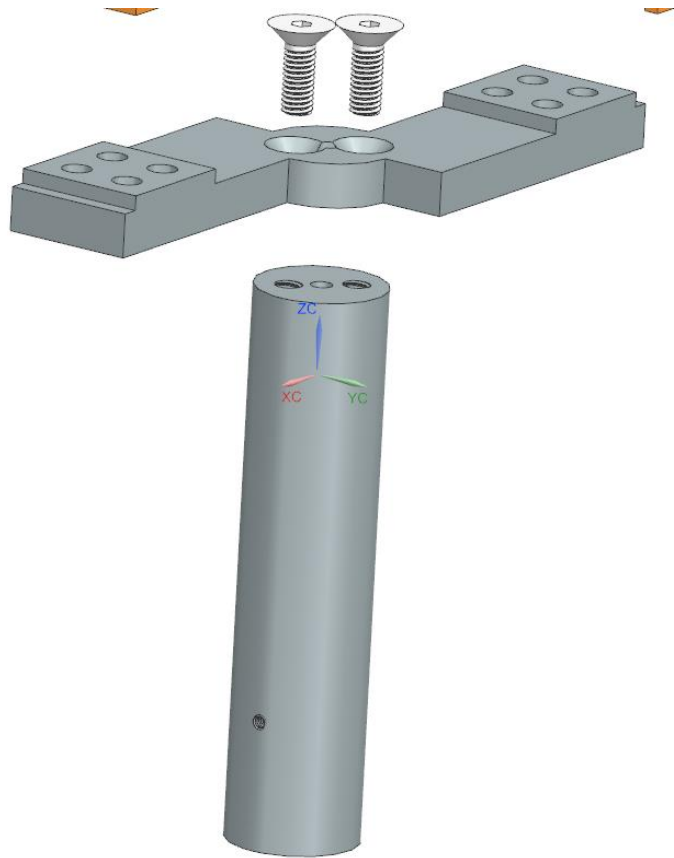
Size of the beam plotted against the distance to the exit slit of the monochromator



Sensor size versus size of the beam and how it effects sensor placement



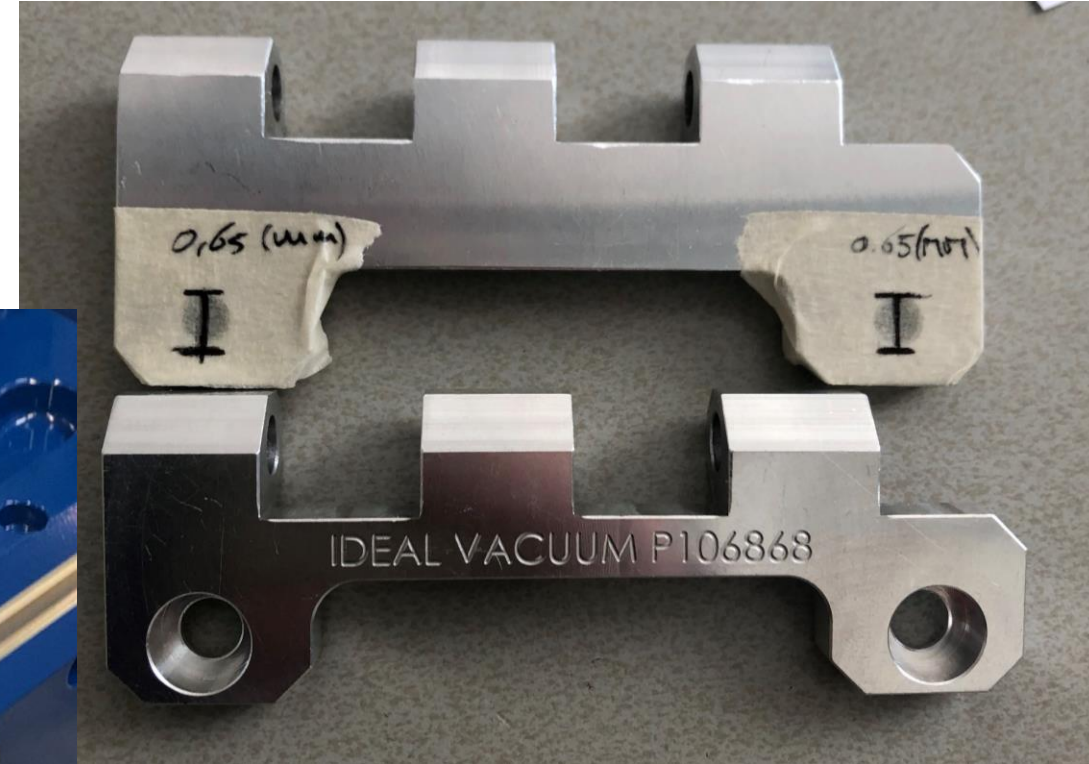
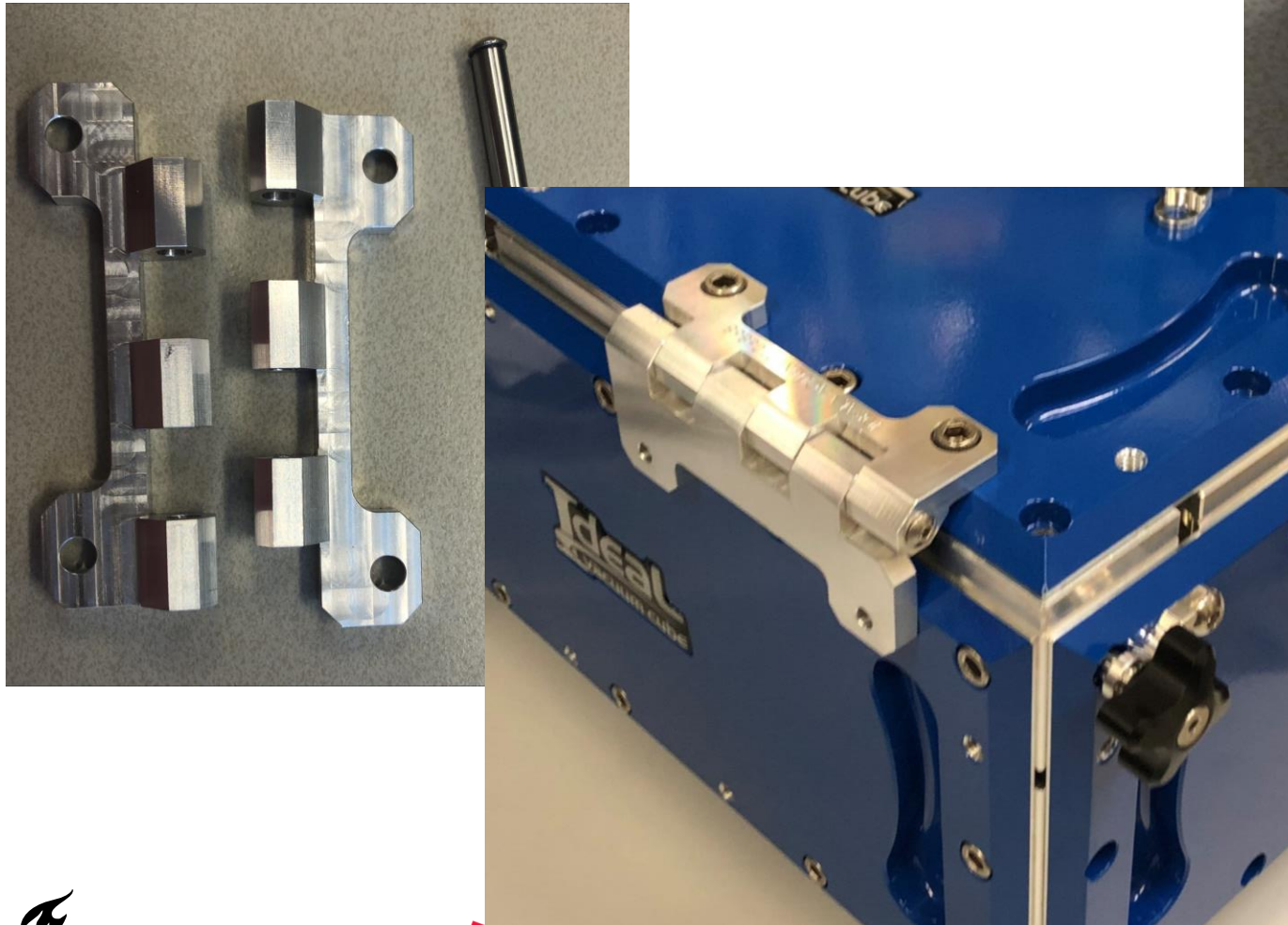
Machined sample holder, without final adjustments



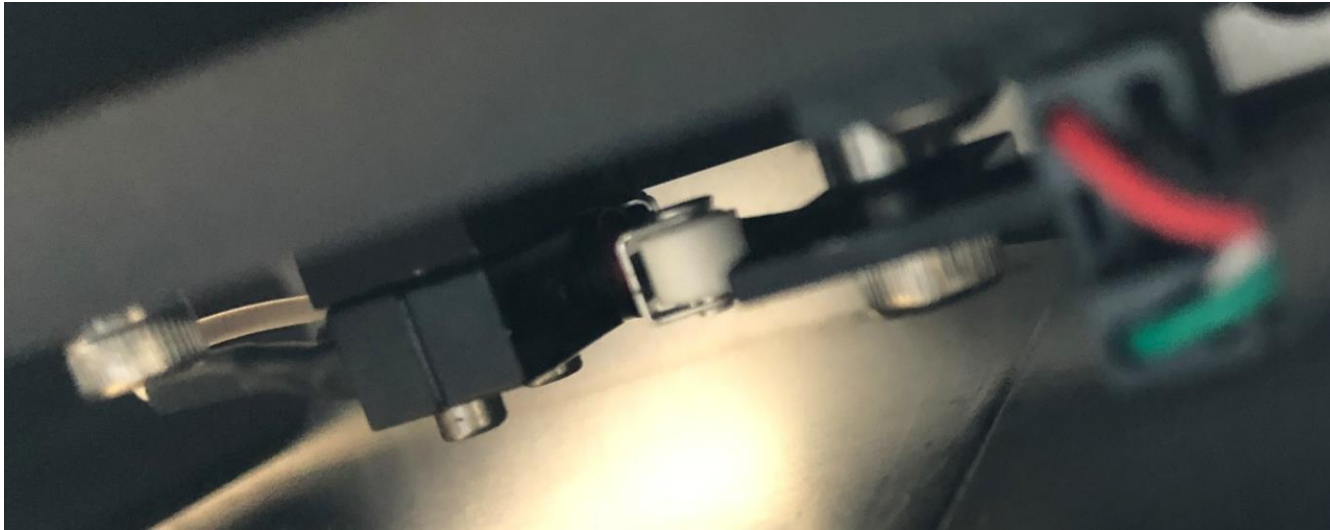
Machined sample holder, without final adjustments



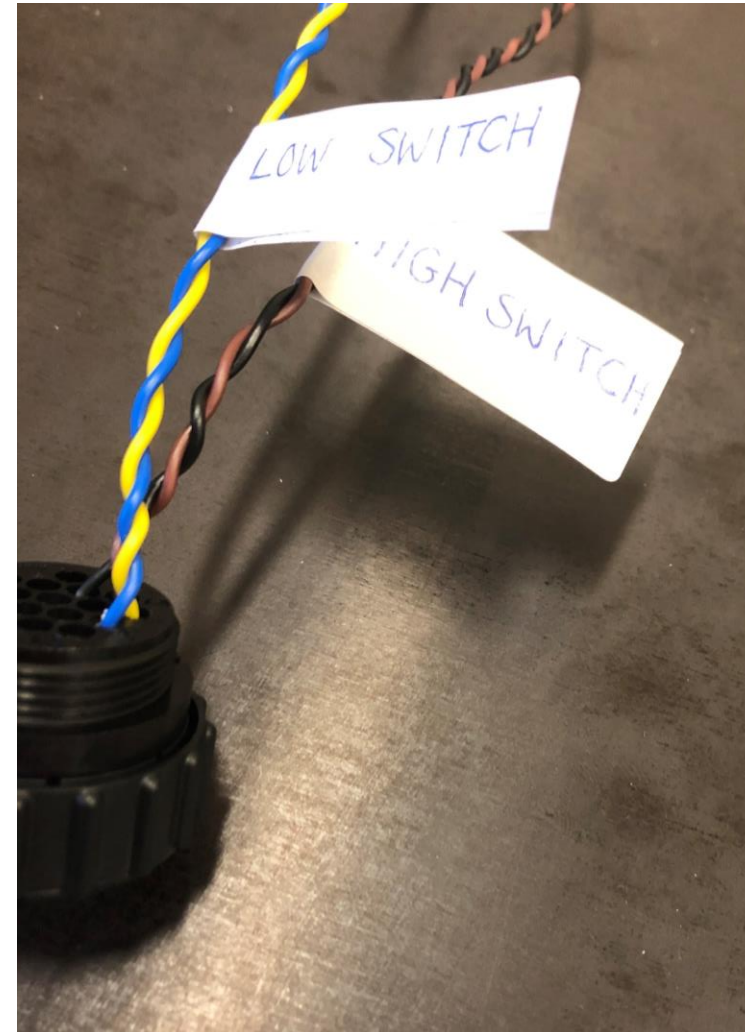
The hinges fabricated and working



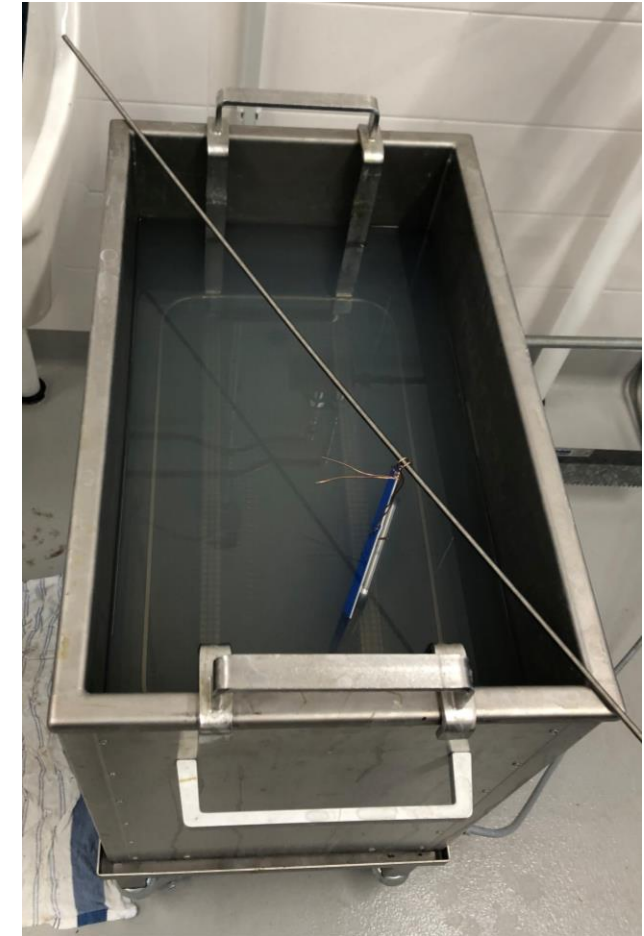
Sorting out cabling and connectors for the monochromator



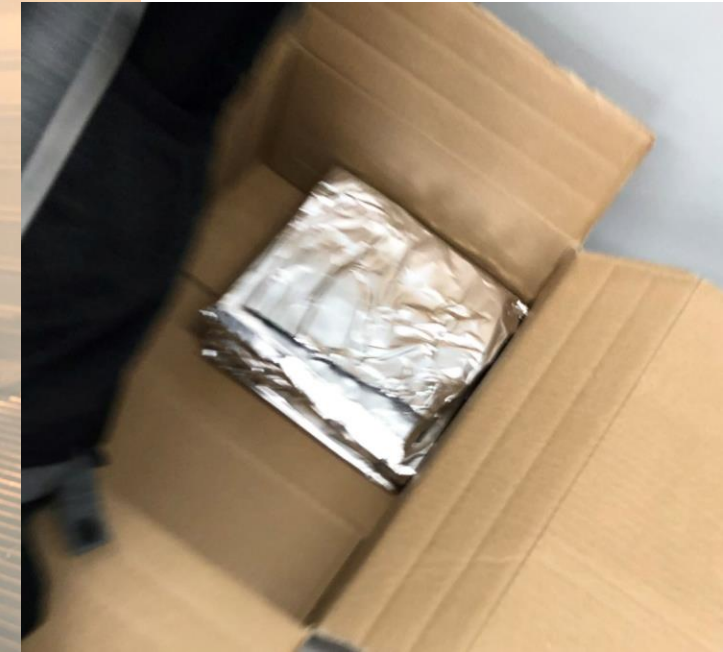
Sorting out cabling and connectors for the monochromator



Cleaning all the vacuum parts, preparing them for the first vacuum test



Cleaning all the vacuum parts, preparing them for the first vacuum test



Ready to go, after this corona hurdle

