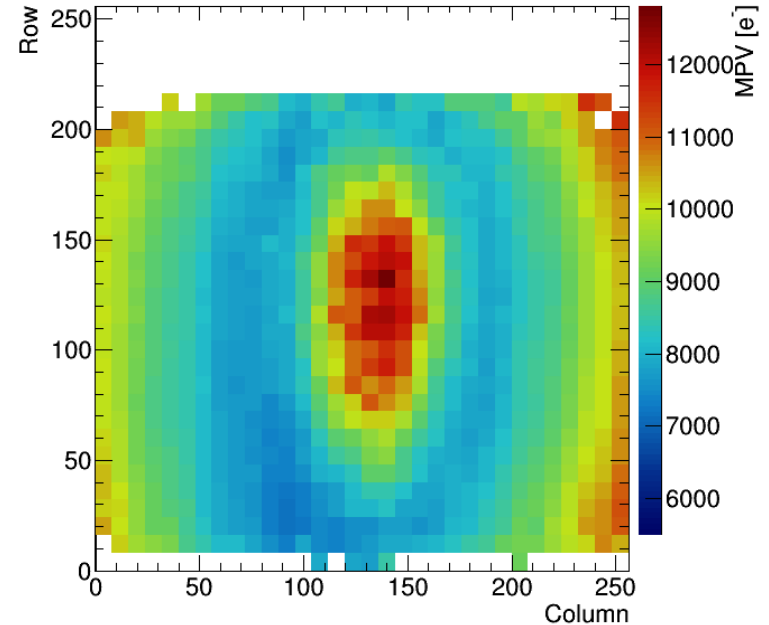
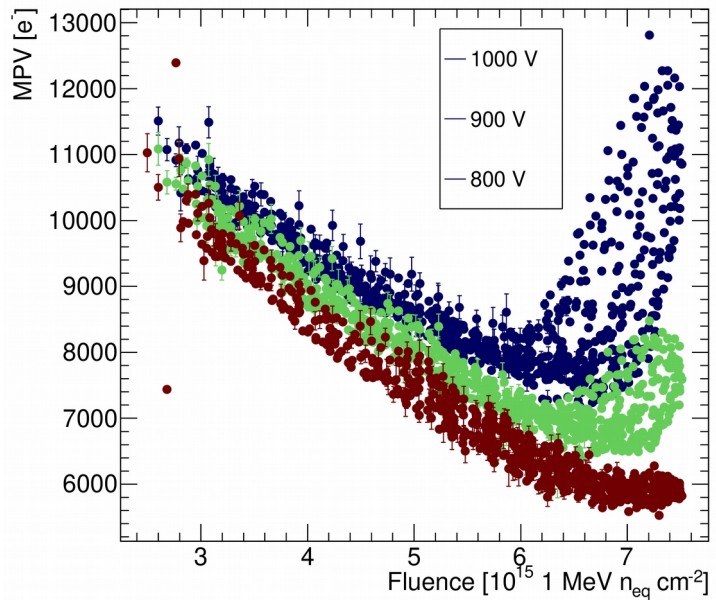


Notes on MPV profile

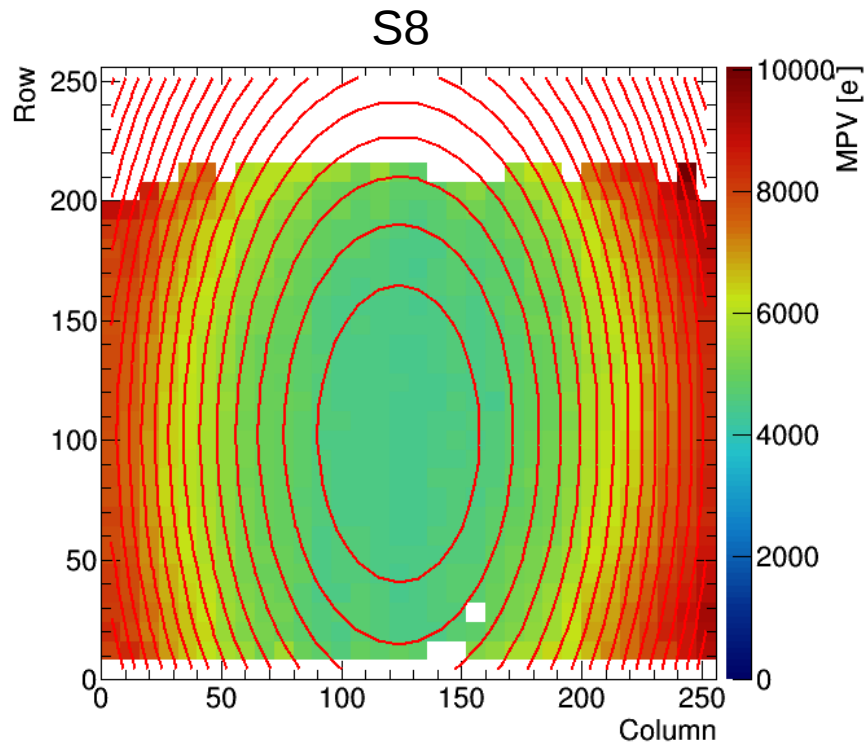
From last time:
Not understood why diverging at high fluence

MPV position map shows why:
Position of charge multiplication (eye of Sauron) is not at highest fluence



Fitting MPV profile

Try to fit 2D gaussian to confirm the position of reconstructed fluence profile by Elena

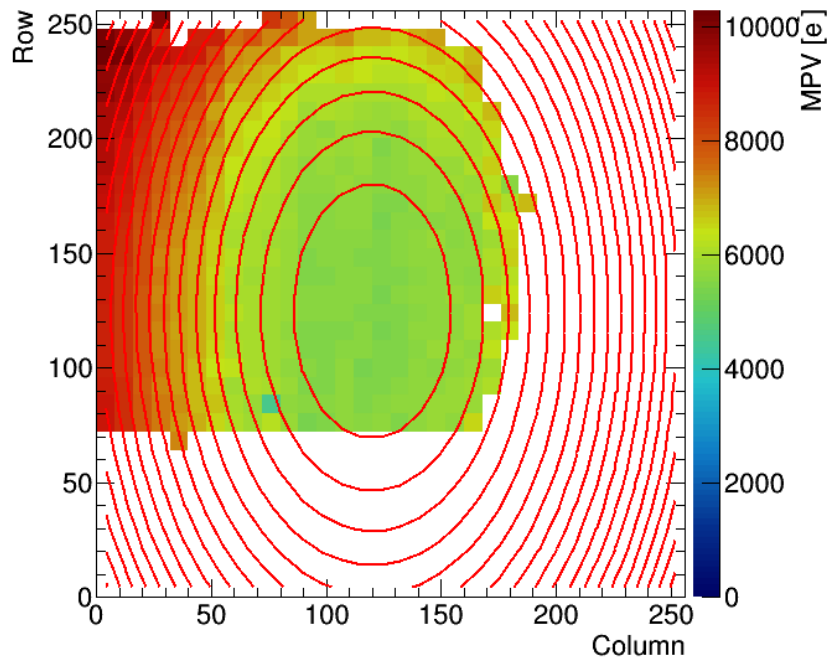


Device	Bias	Elena	MPV
S8	600 V	123.7	123.8
		96.3	102.6
S11	-	-	-
S25	800 V	112.5	120.0
		118.3	124.8
	700 V		117.9
			127.2
S30	1000V	118.6	116.5
		95.5	118.8

Not bound in some cases...

Due to non-uniform irradiation during testbeam, the MPV is cannot be determined everywhere. This poses a difficulty due to not bounding 1 (or even 2) degrees of freedom of the position of the 2D gaussian.

S25



S30

