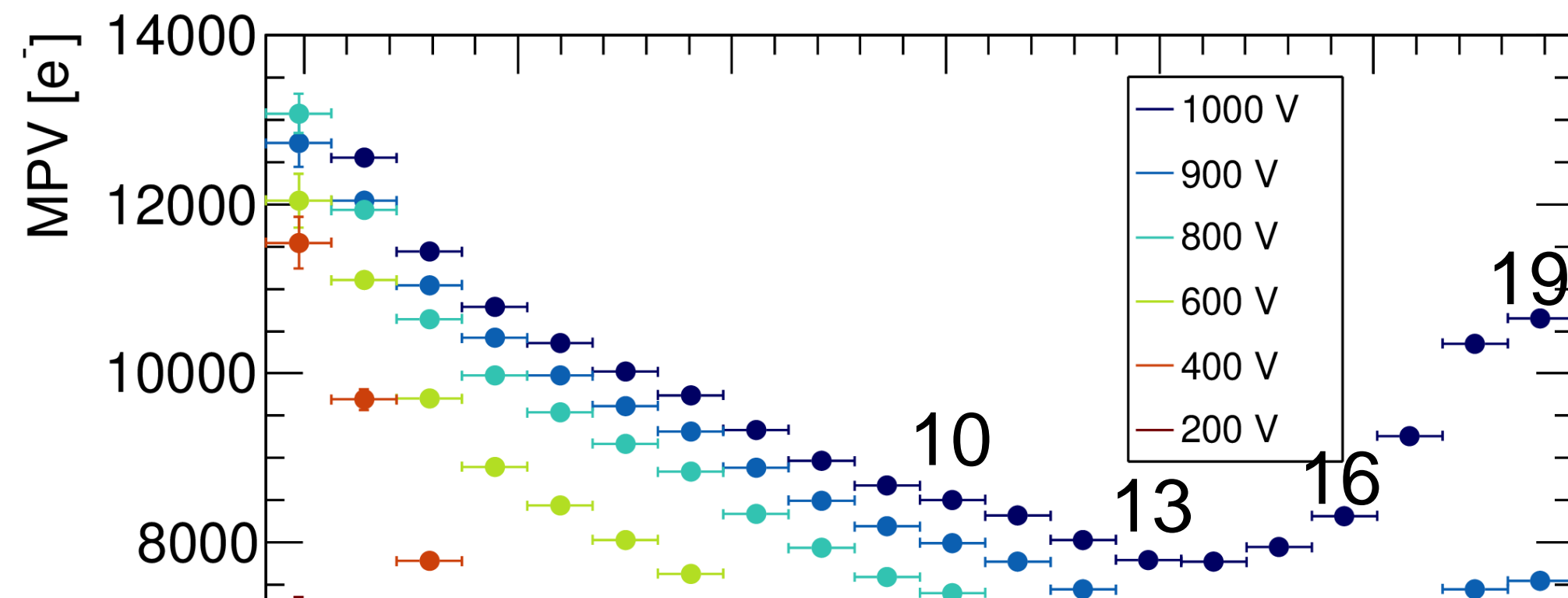
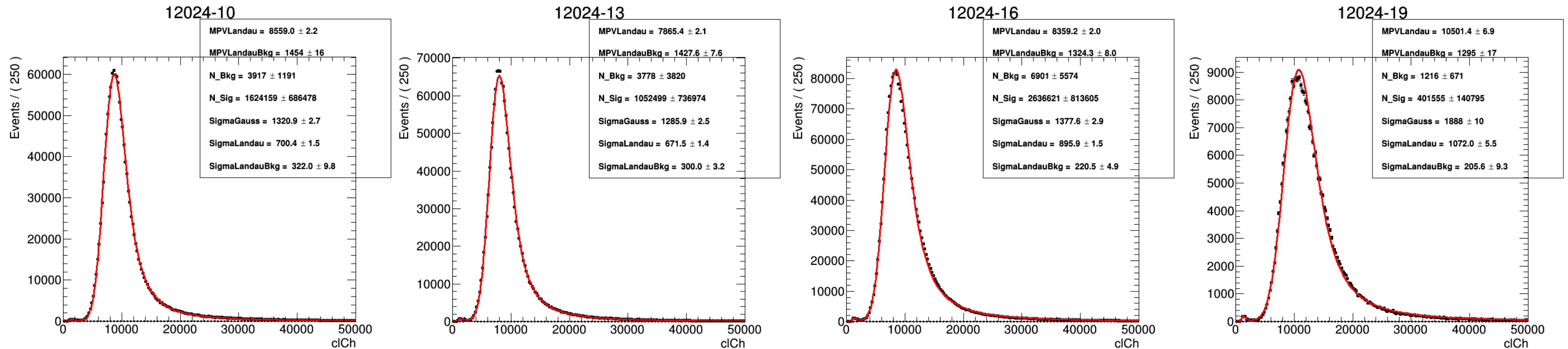


Fast timing meeting

Update on CCE studies

14-11-2019

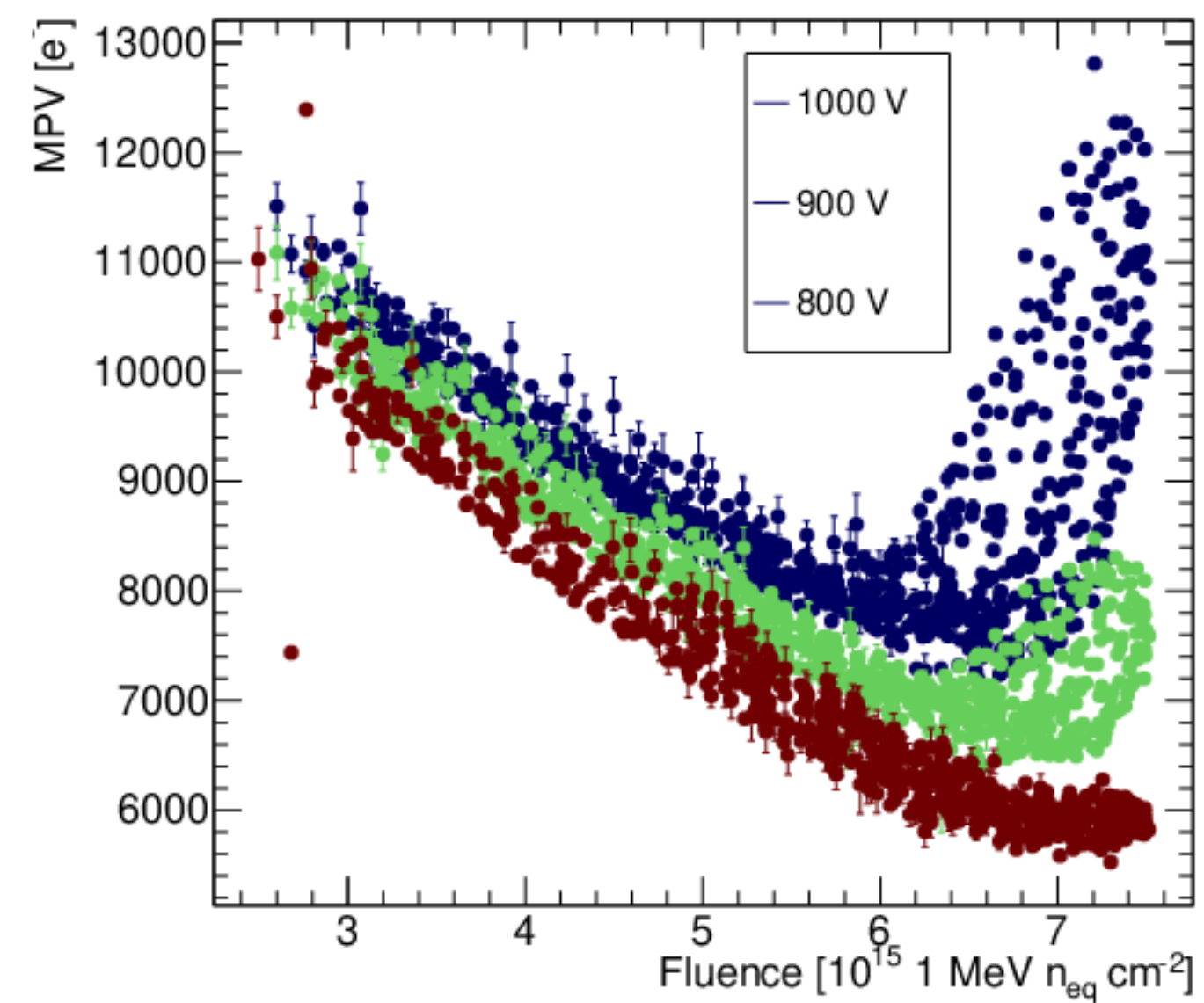
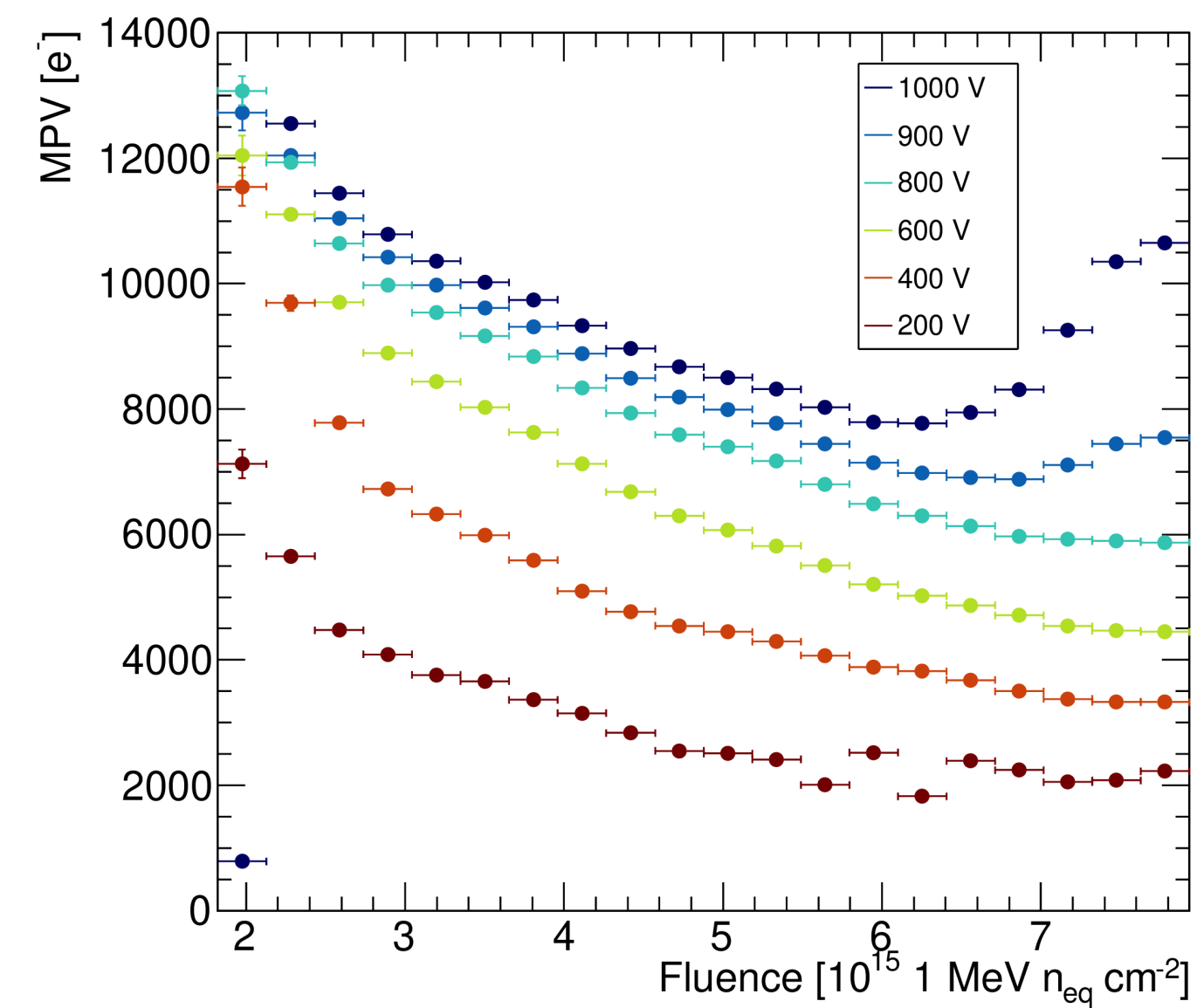
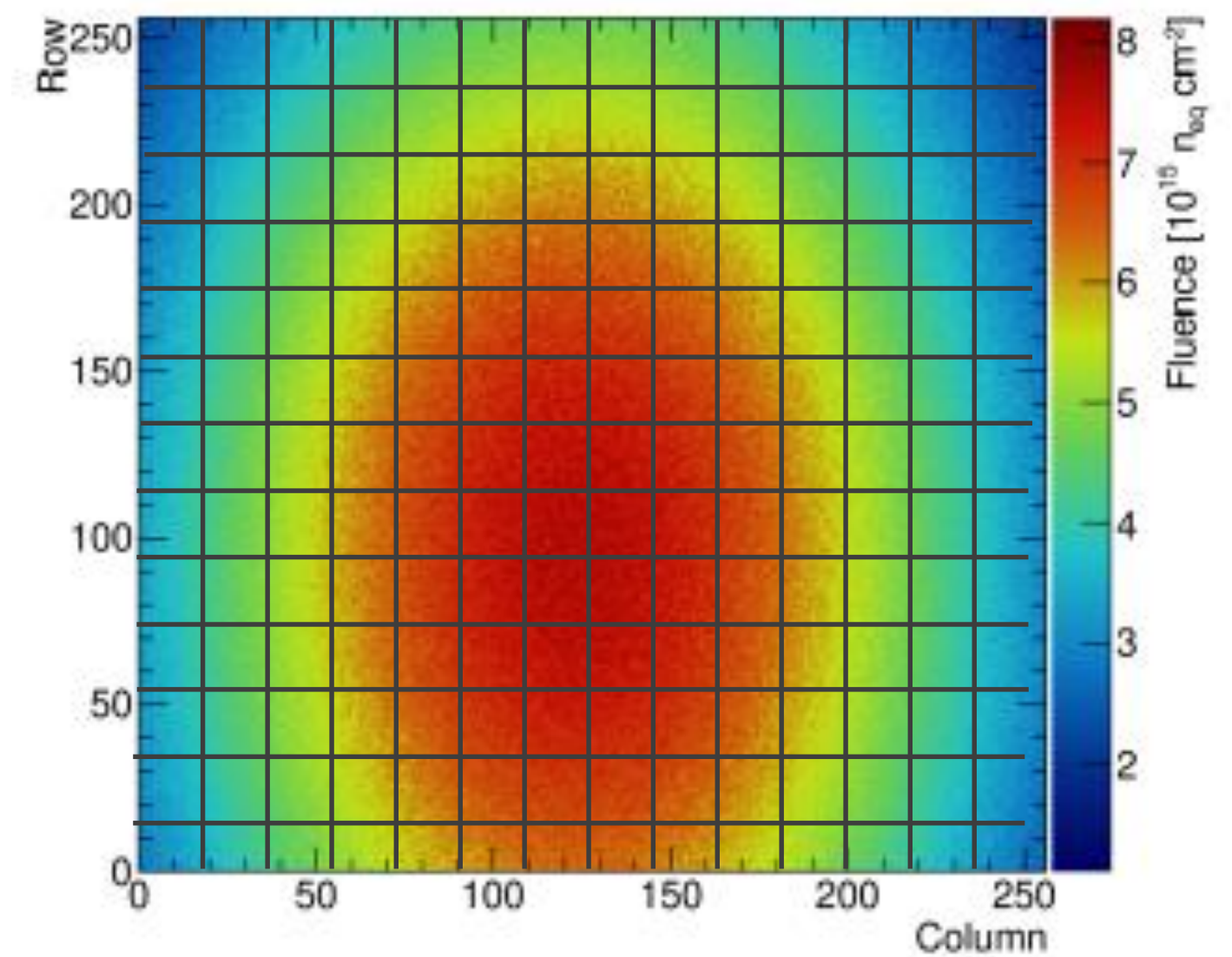
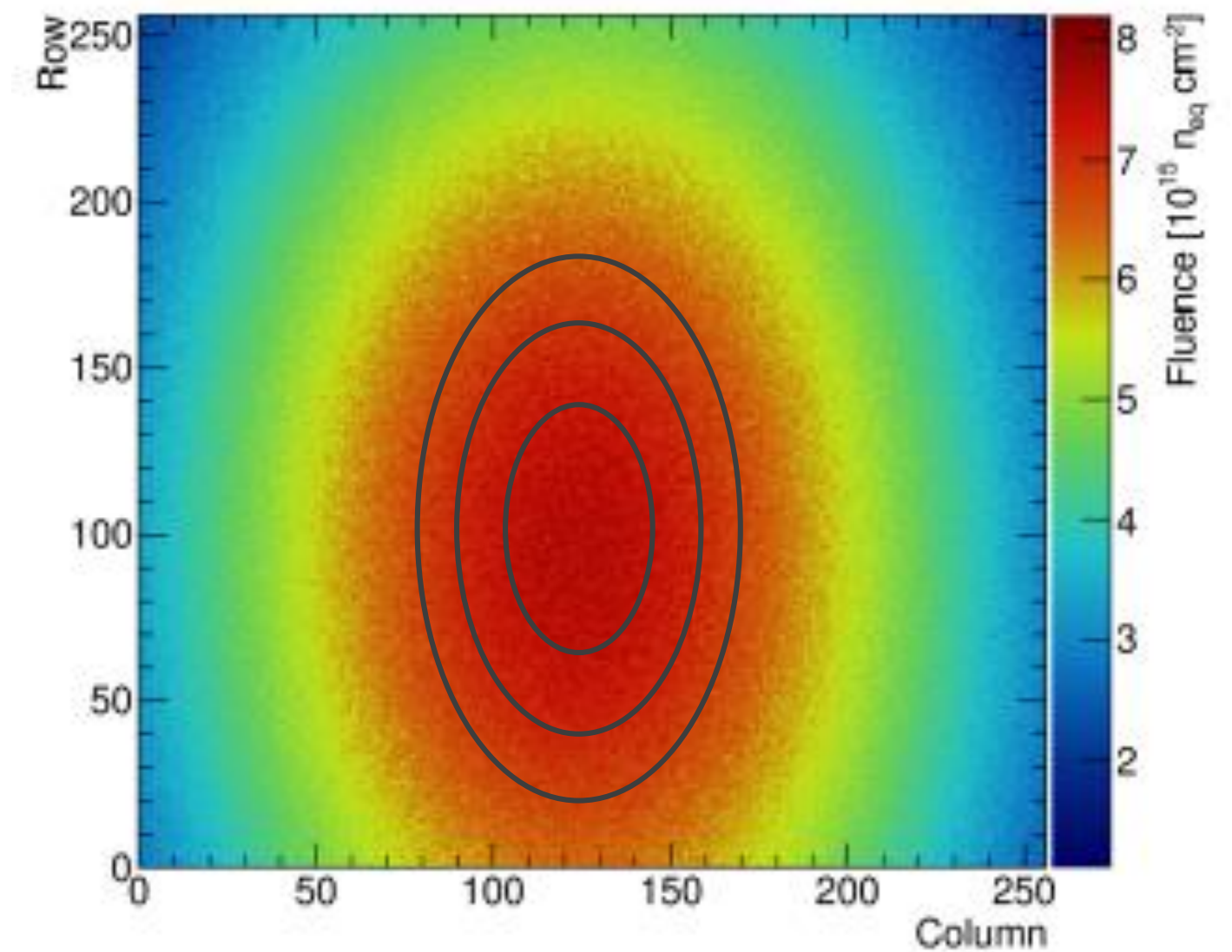
Difficulty fitting charge spectrum



As soon as charge multiplication sets in, it seems that a fit with langaus does not match the shape?

Square binning of charge profile

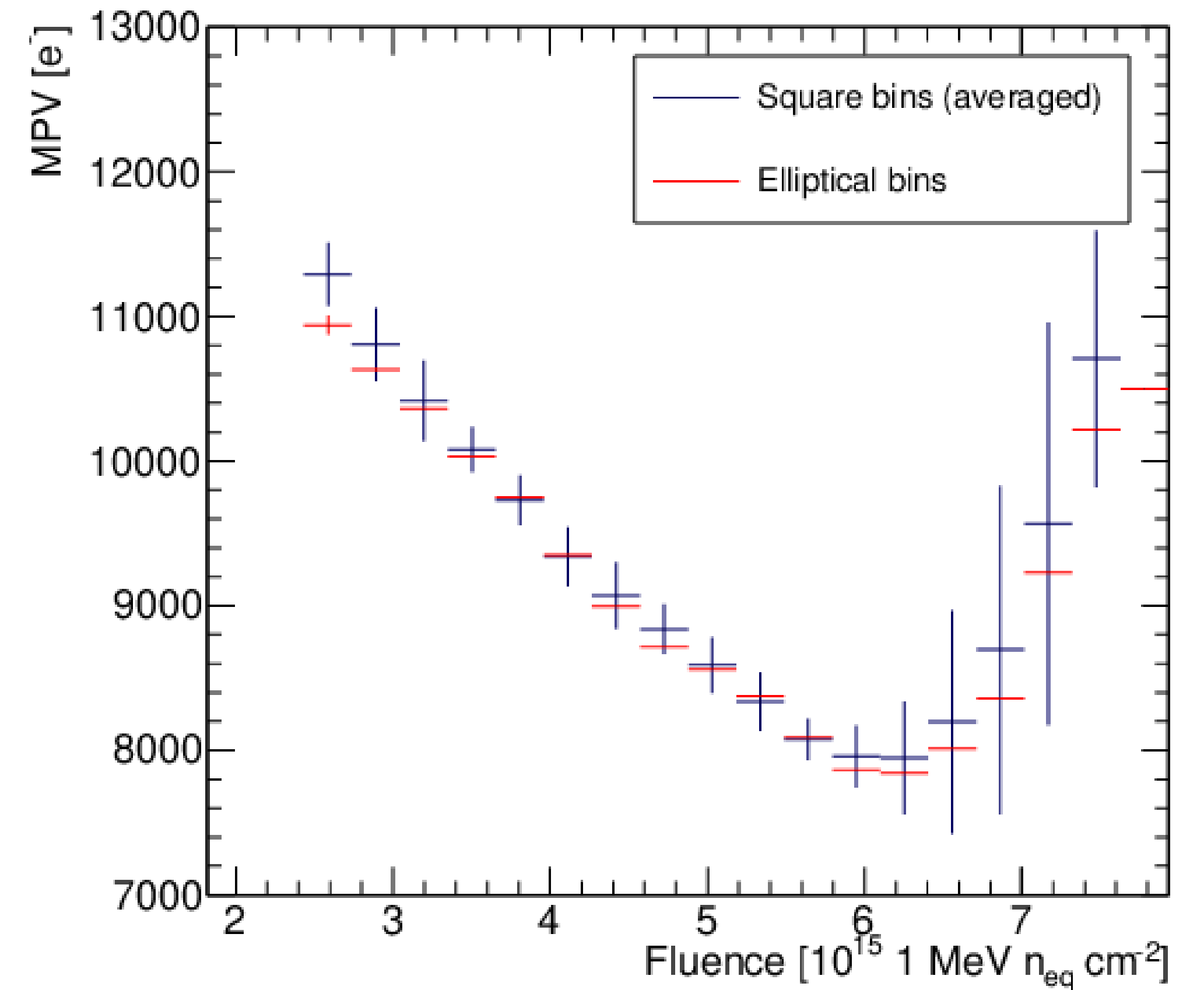
Instead of binning solely on the fluence of the position of a hit, bin all hits in a square and assign the average value of the fluence in that bin to it



Do they differ?

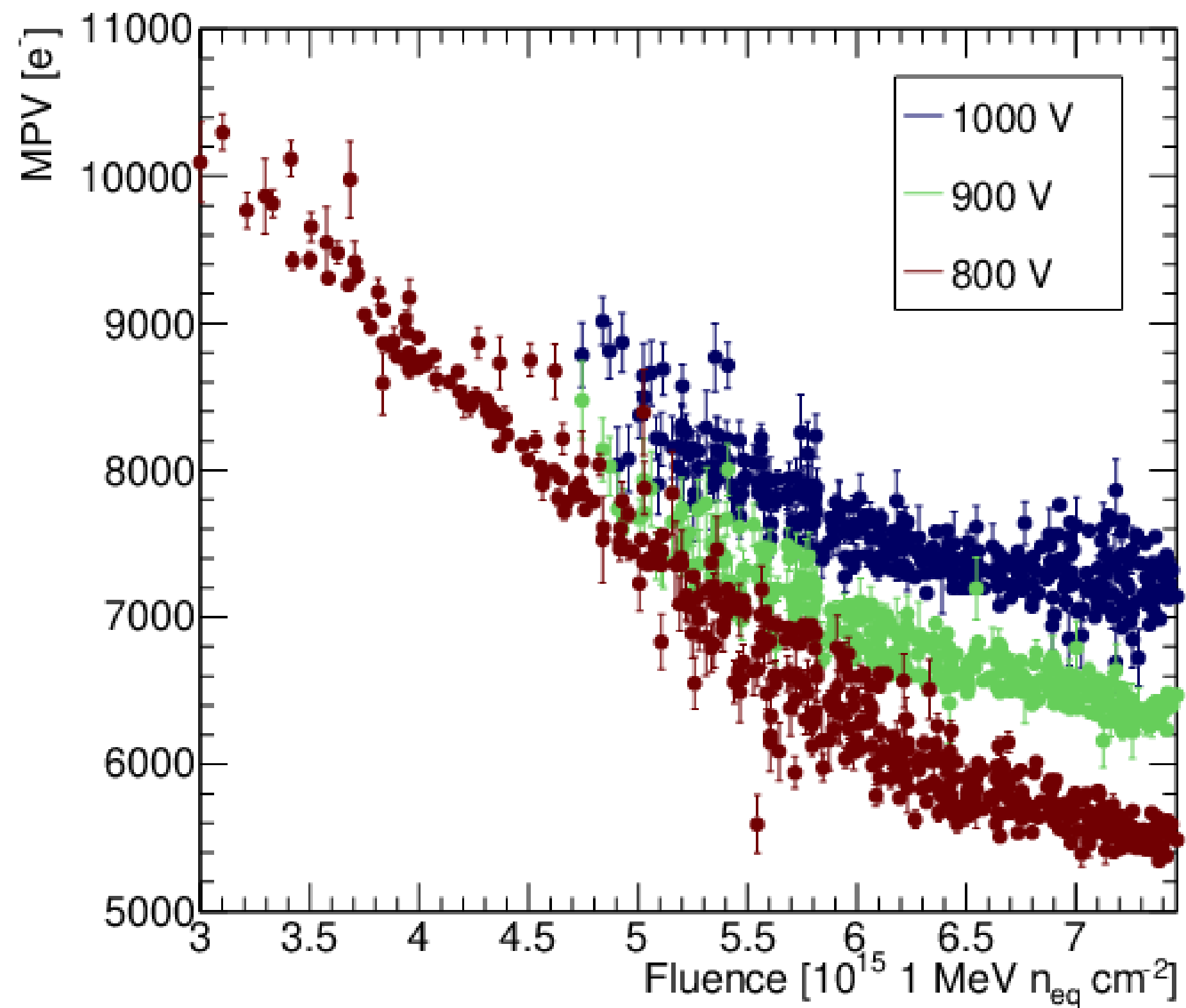
Average all points of square binning method in a range of a elliptical bin. RMS of these points is the error.

MPV vs Fluence



The other sensors

S25 (n-on-p)



S30 (n-on-n)

