



# Weekly meeting

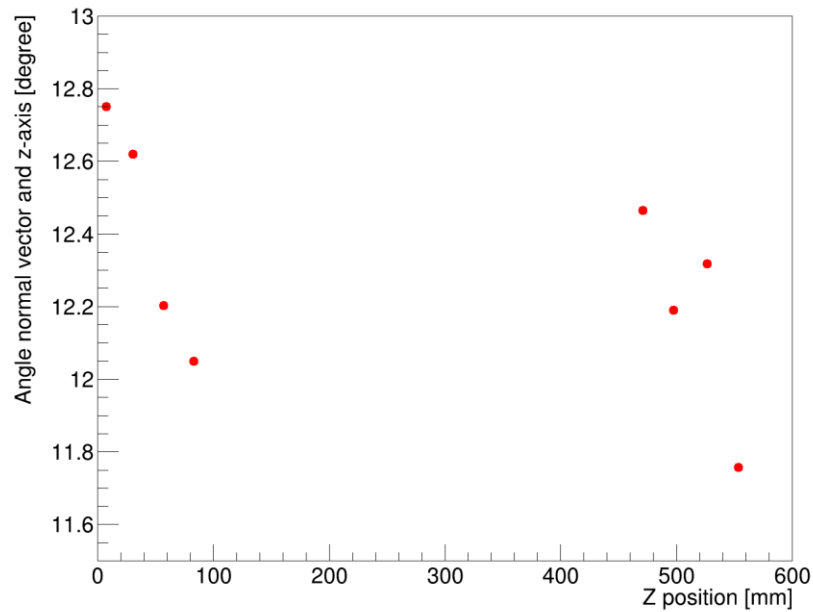
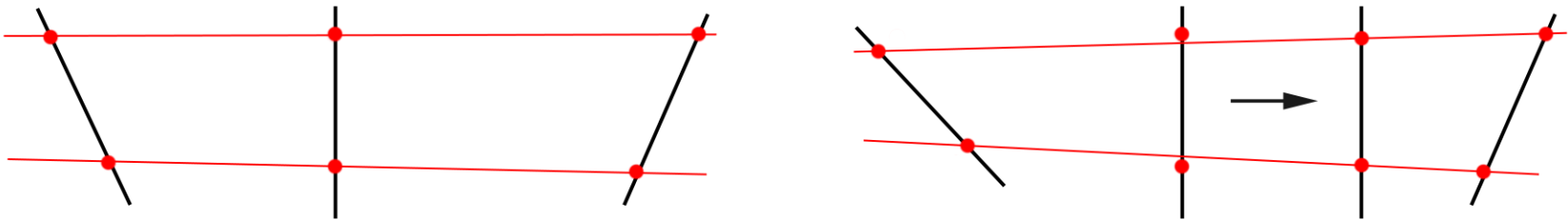
21 February 2019

Peter Bosch

Run 31618  
3D sensor  
 $V_{\text{bias}} = 40\text{V}$   
Angle =  $0^\circ$

# Alignment

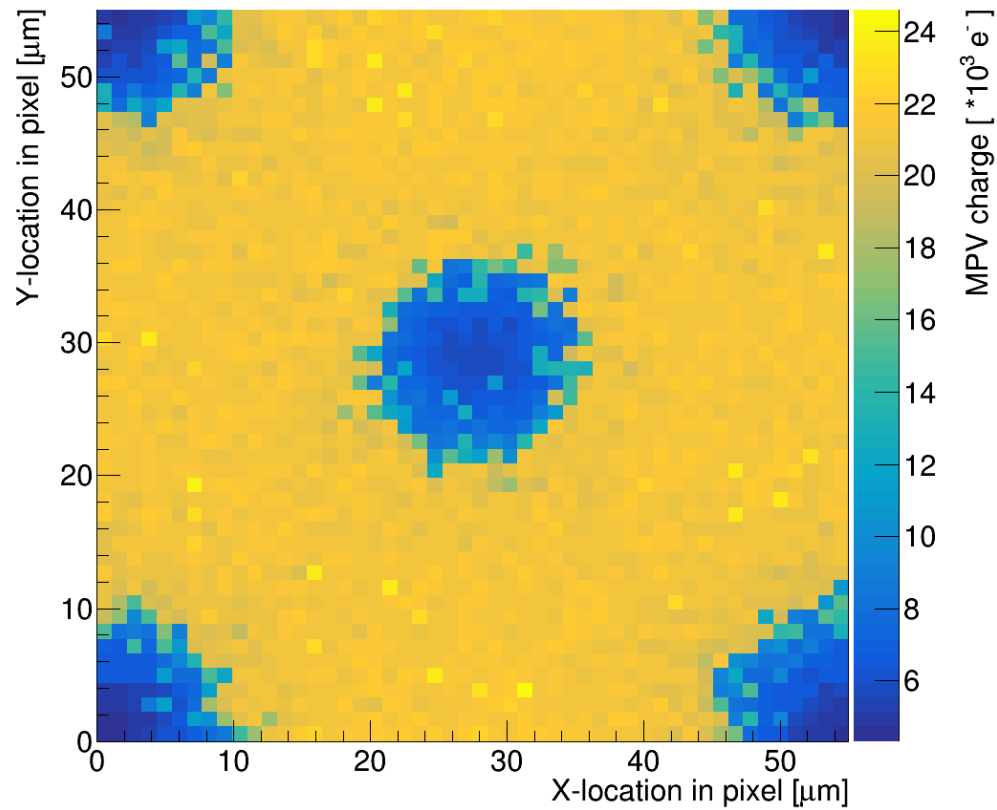
- Rotation of telescope



# Charge map

Run 31618  
3D sensor  
 $V_{\text{bias}} = 40\text{V}$   
Angle =  $0^\circ$

Charge map (Run 31618, 285  $\mu\text{m}$  3D,  $V_{\text{DuT}} = 40\text{V}$ ,  $0^\circ$ )



# Charge map

- Some wrong fits

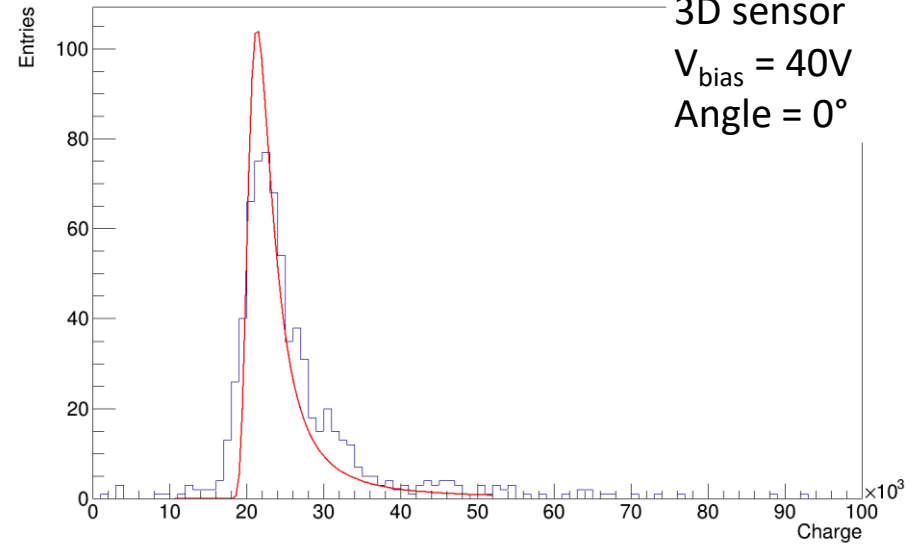
Charge at bin (7,32)

Run 31618

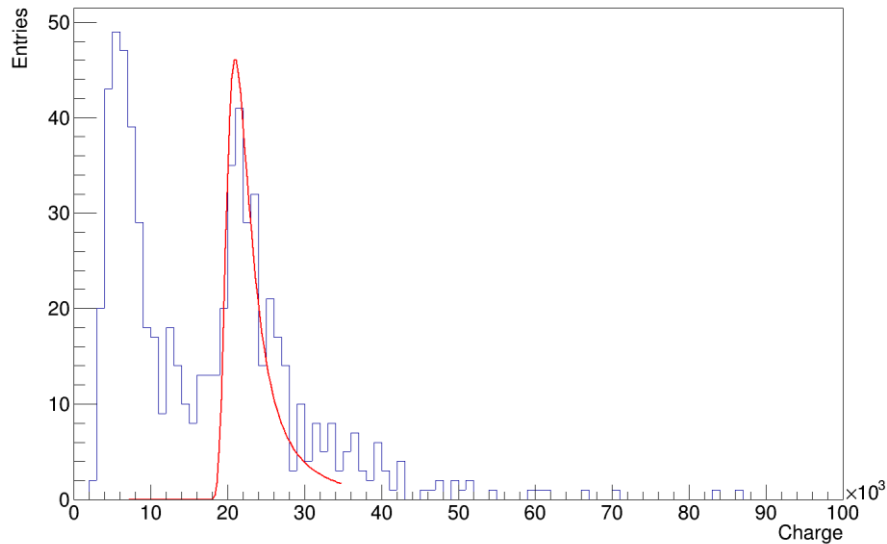
3D sensor

$V_{\text{bias}} = 40\text{V}$

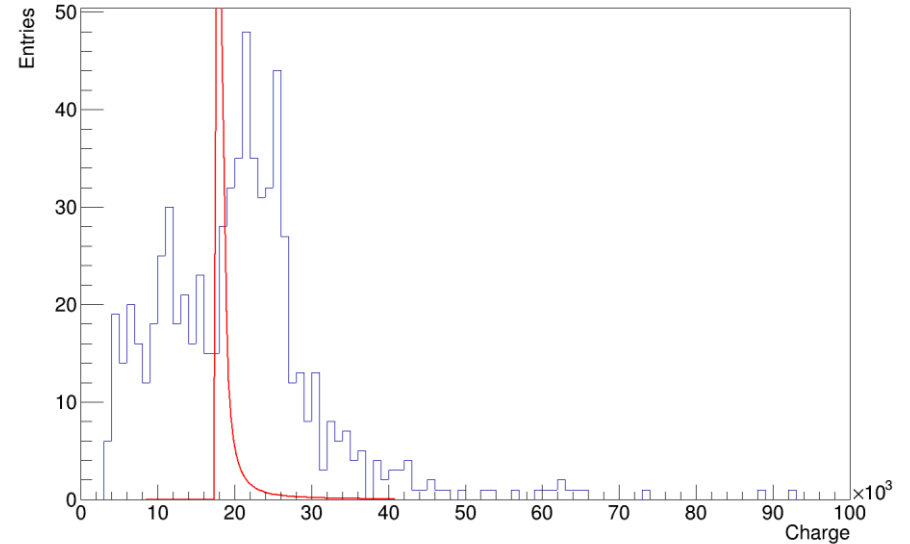
Angle =  $0^\circ$



Charge at bin (23,33)



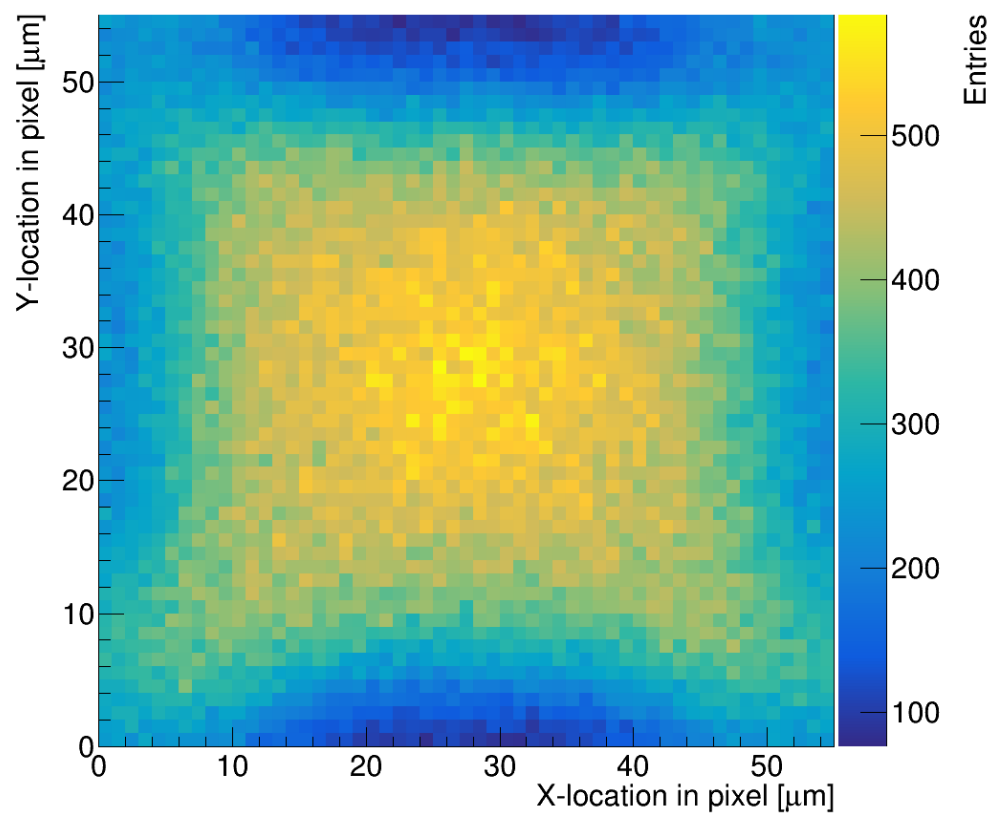
Charge at bin (28,18)



# Hitmap per size

Run 31618  
3D sensor  
 $V_{\text{bias}} = 40\text{V}$   
Angle =  $0^\circ$   
Size = 1

Hits for size 1 clusters



# Hitmap per size

Run 31618  
3D sensor  
 $V_{\text{bias}} = 40\text{V}$   
Angle =  $0^\circ$   
Size = 2

Hits for size 2 clusters

